

# USER MANUAL

Reading carefully before using the machine

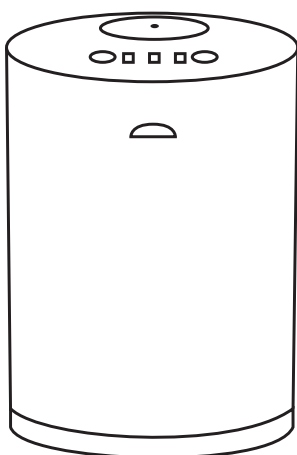


Thank you for choosing our products, you will have a pleasant experience.

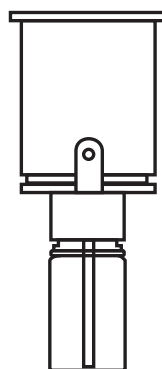
# 1. Product Information

---

Thank you for purchasing our essential oil aroma diffuser. We adopt cold diffusion technology, converting essential oil into micro fine vapour approximately 1-3 microns without using heat and water. The essential oil diffuser process does not damage the molecular structure,therefor maintaining its therapeutic properties for easier absorption into the boby We will help to promote overall well-being,stress relieving and better sleep.



product



Nozzle

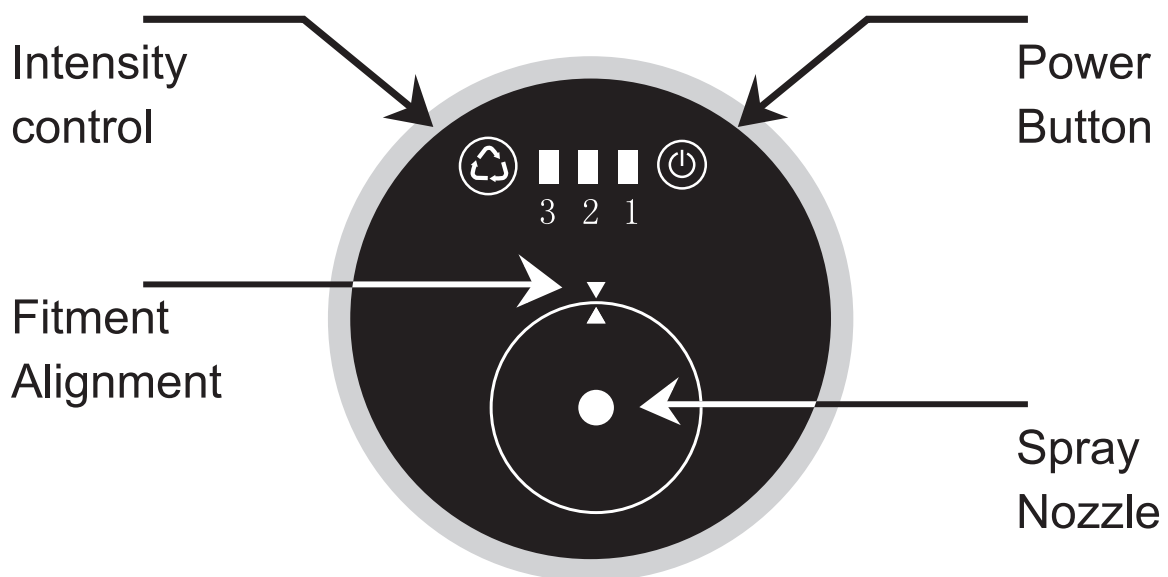


accessories

## 2. Operating Instruction

---

Control panel touch button, 3 gear Atomization intensity, Blue LED display, more beautiful.



**High Intensity :**

Working 3 minutes atomize 60 seconds.

**Medium Intensity:**

Working 3 minutes atomize 30 seconds.

**Low Intensity:**

Working 3 minutes atomize 15 seconds.

## Notes:

1. Three different Intensity is for different use, maximum coverage is 60 square meter.
2. Max working hours: 80 hours in lowest speed.

Spray Nozzle should not be installed into diffuser body without attaching the essential oil bottle

## 3. Set Up Guide

---

It is very easy to use. Just follow the diagram to attach the 10ml essential oil bottle and you are ready to enjoy the benefit of aromatherapy!



1. Press the bottom button firmly with your finger to eject the nozzle.



2. Take out the nozzle & fasten the oil bottle to the nozzle.



3. Align nozzle to white orifis inside diffuser.



4. Press the nozzle into the corresponding slot into the machine, till it is flush with the top cover.

## **Charging precautions**

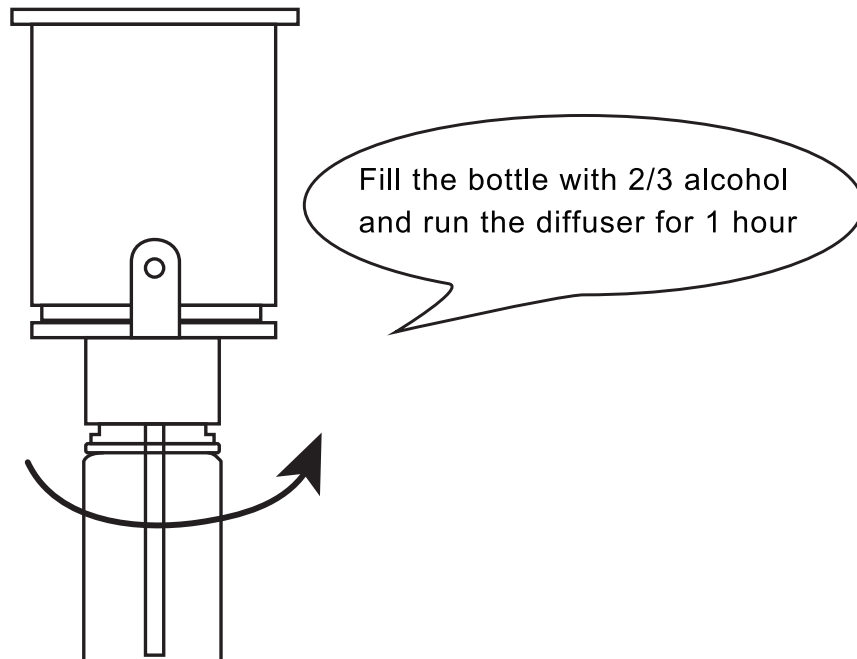
1. Use the charge of output voltage DC5V, PC computer USB interface, mobile charger with USB interface, or car charger with USB interface(please choose the certified charger from branded manufacturer ).
2. Repeated plugging and unplugging of the charger will result in damage to the product, which is normal for rechargeable batteries.

### **Charging:**

1. Connect USB cable to the interface.
2. You can charge the product by using a mobile power bank, car charger or power outlet.
3. When charging, the LED light on panel will flash, When the diffuser is fully charged,the light will turn solid blue.
4. The diffuser can be used for up to 80 hours when fully charged.

## 4.Maintenance

---



1. Take out nozzle
2. Fill with 2/3 alcohol, run 1 hour
3. Clean the nozzle with soft rag, and then dry it.

## 5. FAQ

---

1. How long will the essential oil last?

If in lowest speed, about 50 hours

2. How long to fully charge the battery?

About 3 hours

3. How long is the battery standby? And for how many cycles rechargeable?

80 hours(in lowest speed). 500 times cycle rechargeable.

4. What kind of essential oil can I use for this diffuser?

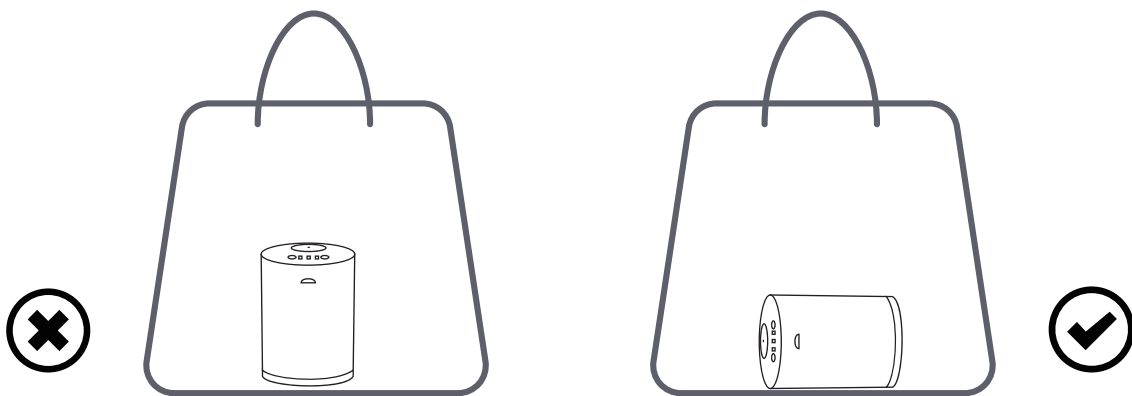
Use pure botanical essential oil or high volatile oil without impurities.



## 6. CAUTIONS

---

1. Don't modify or disassemble this product, which will caused damaged. Warranty will be void.
2. Don't tip the unit when oil is inside.
3. Please turn off the power switch when changing oils.
4. If the nozzle accidently drops inside, gently use a screddriver to retrieve it.
5. Don't use this product when temperature is too high or too low(10 °C -40 °C)
6. If you are not using it for a long time, please take off nozzle and diffuser separately to store.
- 7.Keep out of the reach of children and pets.



Do not overturn the diffuser or leave the diffuser on its side while oil is inside. This will cause the oil to be poured back into the air pump and will cause permanent damage to the Diffuser.

